

## RESIDENCIES AND LONGER PROJECTS

All our residencies begin with a visit to a professional puppet show at the theatre, followed by a Q&A with the puppeteers. The next stage takes place in school/college, when participants work with puppet and drama workshop leaders to devise a story, design and make their puppets, and create a show. The project culminates in a "sharing" performance either at your venue or on the Little Angel stage.

Residency lengths and content are flexible to suit your needs. Contact us for further details.

## RESOURCES...

### EDUCATION PACK FOR EACH LITTLE ANGEL THEATRE PRODUCTION

All schools booking our productions will receive a pack containing background information and curriculum links.

**Cost:** FREE Access past packs via our website

### SCHEME OF WORK – PUPPETRY & LITERACY

Based around our ground breaking residency projects, this scheme of work gives KS 1 and 2 teachers the tools to deliver a puppetry and literacy project in class (with cross-curricular links). A perfect way to incorporate recommendations from The Rose Review.

**Cost:** £7 inc P&P in UK

## Contact us...

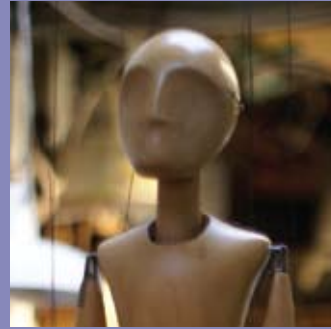
**Post Show Chat**  
**Book via the Box Office when you book your tickets**  
**020 7226 1787**

**All other enquiries**  
**Contact the Education Team:**  
**Slavka Jovanovic, Education Manager**  
**Sarah Schofield, Education Officer**  
**education@littleangeltheatre.com**  
**www.littleangeltheatre.com**  
**020 7359 8581 ext 6**

# Little Angel Theatre



The Home of British Puppetry



## ACTIVITIES FOR SCHOOLS, NURSERIES, COLLEGES & EDUCATORS

Little Angel Theatre  
14 Dagmar Passage, Islington N1 2DN  
Box Office 020 7226 1787  
www.littleangeltheatre.com

**At Little Angel Theatre we run a year-round programme of fantastic puppet shows for all ages. In this menu you will find a range of activities and training to compliment a visit to the theatre or to stand alone as a tool to support learning objectives, curriculum and exam requirements. Get in touch to find out about our successful participatory projects, run either at our theatre in Islington or in schools, colleges and community centres throughout London and beyond. Slavka Jovanovic, Education Manager**

## COME TO US...

### POST-SHOW CHAT

These 15 minute sessions with the performers are perfect opportunities to learn more.

**Cost:** FREE when booked with a theatre show

### TOUR THE THEATRE AND MEET THE PUPPETS

This hour long visit lets you go behind the scenes and see where the puppets are made. Have a go with different puppets and learn about movement and materials.

**Cost:** £45 + VAT

**When:** Mondays and Tuesdays, term-time

**Max group size:** 35 children or 20 adults per tour

## PROFESSIONAL DEVELOPMENT

We train teachers and professionals to use puppetry in education, including puppet making, performing with puppets/staging a show and story telling.

**INSET** takes place at the theatre or at your venue.

Sessions can be full day, half day, or twilight.

Training is tailored to suit all curriculum stages, including Early Years.

**Cost:** Prices start from £25 per head at Little Angel Theatre and from £250 + VAT per group in your school/centre. Travel & accommodation will be charged for bookings outside London.



## WE'LL COME TO YOU...

### STANDARD PUPPET MAKING WORKSHOPS

Choose from three different 1 day puppet making workshops which give pupils the following study skills – investigating, designing, making and evaluating:

#### 1. Shadow Puppets – Exploring Light and Shadows

Use the puppets you make to investigate shadow and light in performance (suitable for all ages, including adults).

#### 2. Table Top Puppets – Traditional Fairy Tales

Create puppets based on *Cinderella*, *Sleeping Beauty* or *Little Red Riding Hood* – use them in your literacy lessons to explore characters, write scripts and put on performances (suitable for Year One to adult).

#### 3. Monster Glove Puppets (D&T)

Linked directly to D&T objectives (making, cutting & joining fabric). The day includes investigation, designing, making and evaluating (suitable for Year Two to adult).

**Cost:** £300 + VAT per class for a day

### PUPPET MANIPULATION WORKSHOPS

Bring the puppet you have made to life with additional workshop days. Contact us for details (suitable for all ages, including adults)

**Cost:** £175 + VAT per class per day

Travel & accommodation will be charged for workshop bookings outside London.